

**Hollywood Central  
Performing Arts Center**  
**Art and Culture Center of Hollywood**

---

*TECHNICAL  
SPECIFICATIONS*

2015

---



# Table of Contents

<b>HC-PAC</b>	<b>3</b>
<b>MAP</b>	<b>4</b>
<b>DIRECTIONS</b>	<b>5</b>
<b>FACILITIES LOCATION MAP</b>	<b>6</b>
<b>PARKING LOT</b>	<b>7</b>
<b>SITE PLAN</b>	<b>8</b>
<b>LOBBY</b>	<b>9-10</b>
<b>SEATING</b>	<b>11</b>
<b>STAGE SPECIFICATIONS</b>	<b>12-14</b>
<b>DRESSING ROOM</b>	<b>15</b>
<b>LIGHTING</b>	<b>16-17</b>
<b>SOUND</b>	<b>18</b>
<b>COMMUNICATION</b>	<b>19</b>
<b>CIRCUIT LOCATIONS</b>	<b>20</b>
<b>INVENTORY</b>	<b>21</b>
<b>RENTAL RATES</b>	<b>22</b>

# HC-PAC

The Hollywood Central performing Arts Center (HC-PAC) is a multi-purpose facility at the heart of Hollywood's art and culture district. Every year it is host to a diverse lineup of live theatrical performances, screenings, concerts, political gatherings, religious assemblies, receptions, education classes, and workshops. The HC-PAC caters to the local community- making it one of the most affordable facilities in South Florida for businesses, civic groups, non-profit organizations, and others seeking meeting or presentation space.

## **Mission Statement:**

The Art and Culture Center of Hollywood is committed to creating opportunities for all people to experience the visual and performing arts. To fulfill this mission, the Center:

- interweaves exhibitions, performances, and educational programs that reflect the highest standards of artistry and diversity;
- fosters a creative environment where new and challenging work can thrive and flourish;
- educates the community through innovative programs for children and adults;
- enhances quality of life by making the arts available to the broadest possible audience through free and affordable programs.

At the HC-PAC, your organization can have affordable access to:

- Our 500-seat auditorium
- Full spectrum of theatrical lighting and sound
- Box Office services
- Dressing rooms, classroom, and storage space
- An open, attractive lobby with concessions and kitchen area

Our professional administration and volunteer staff is dedicated to making your meeting, event or production a rousing success. Contact us soon to book your next event at the Hollywood Central Performing Arts Center.

# Map



**HOLLYWOOD CENTRAL PERFORMING ARTS CENTER**  
1770 Monroe Street, Hollywood, FL 33020 (954) 921-3439

# Directions

## **From I-95:**

Take the Pembroke Road exit (#19) and go east to route US 1. Turn left at US 1 heading north and the Performing Arts Center will be on your right at the intersection of US 1 (Federal Hwy) and Monroe Street.

## **From Miami on Route 1:**

Take route US 1 (Federal Hwy) north towards Hollywood. The Performing Arts Center will be on your right at the intersection of US 1 and Monroe Street.

## **From Ft. Lauderdale on Route 1:**

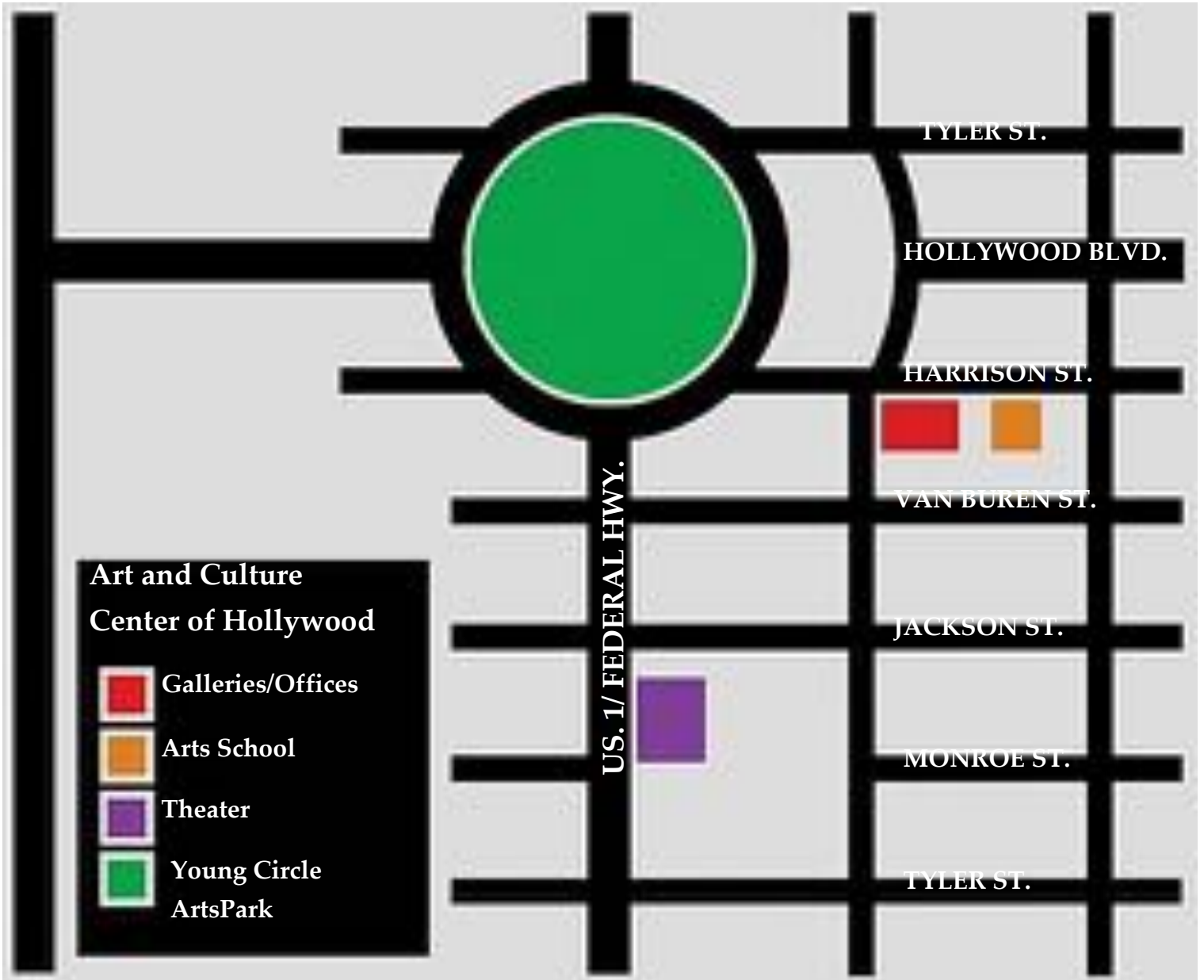
Take route US 1 (Federal Hwy) south to Hollywood Blvd. Go around Young Circle and continue on US 1 south. The Performing Arts Center will be on your left at the intersection of US 1 and Monroe Street just 2 blocks south of Young Circle.

## **From A1A:**

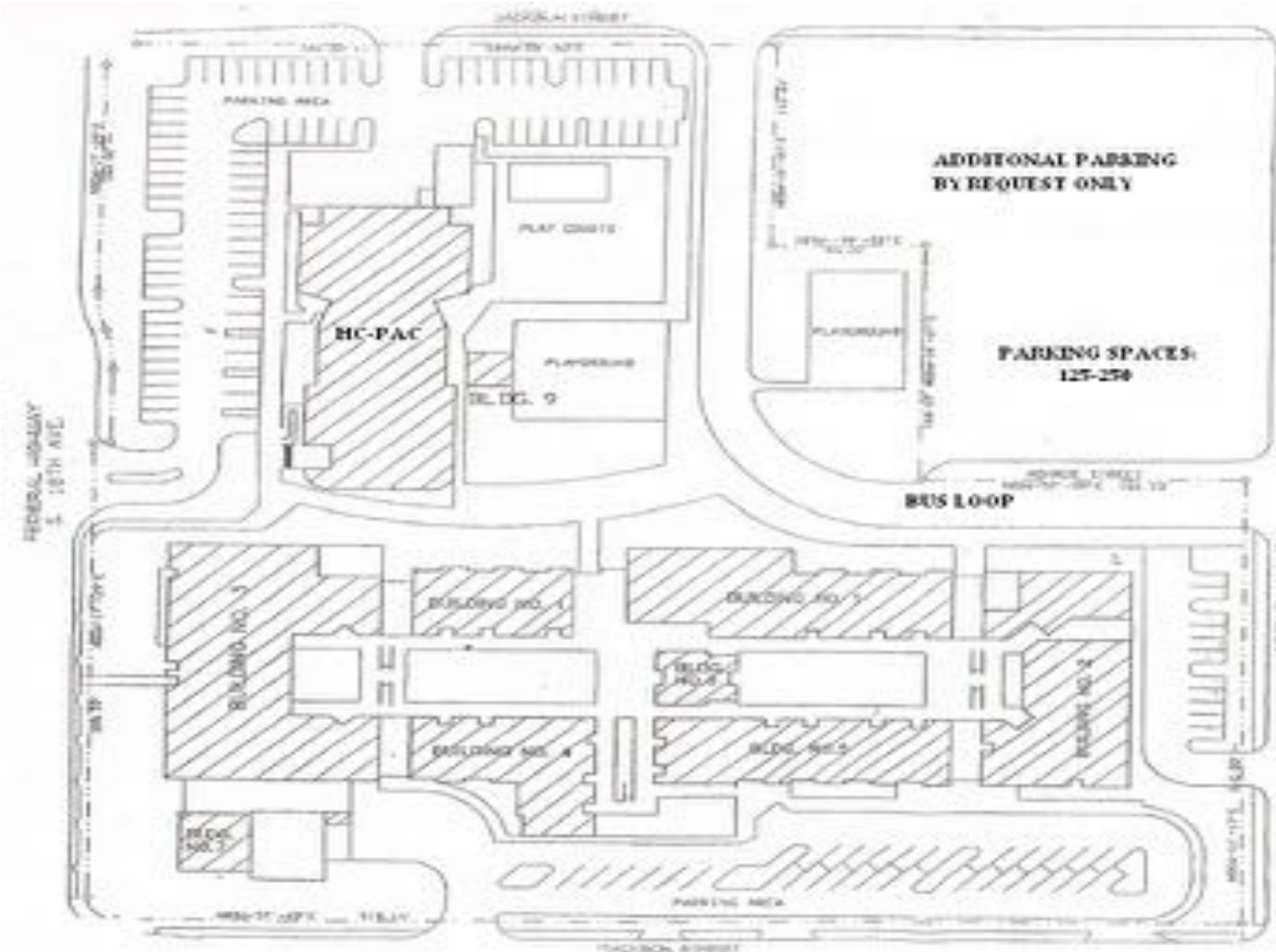
Take Hollywood Blvd and head west to Young Circle. Go around Young Circle to route US 1 South. The Performing Arts Center will be on your left at the intersection of US 1 and Monroe Street just 2 blocks south of Young Circle.

**\*BUSES PLEASE USE THE BUS LANE ENTRANCE LOCATED AT JACKSON STREET ON THE NORTH SIDE OF THE THEATER.**

# Facilities Location Map



# Parking Lot



HOLLYWOOD CENTRAL PERFORMING ARTS CENTER  
1770 Monroe Street, Hollywood, FL 33020 (954) 921-3439

# Site Plan



## Loading Dock:

Height = 3'-9"

Truck Length Allowance = 24'

Exterior/Interior Loading Doorways = 5' - 10" W x 6' - 10" H



# Lobby

## Layout

\*NOT TO SCALE



# Lobby

## **SPECIFICATIONS**

### **Capacity:**

Seated: 135 total  
100 w/ tables  
135 "standing room" (chairs only)  
Reception Style: 175  
No chairs

### **Platform Riser Dimensions:**

Height = 16"  
Width = 16'  
Depth = 8'

\*Some adjustments can be made based on space and availability

### **Lighting Equipment:**

21 Par 64 (Edisons)  
14 Par 56 (Edisons)  
2 Lighting trees for Par cans  
3 NSI 4600 dimmer packs  
1 NSI 6000 dimmer pack

### **Sound Equipment:**

5 SM58 microphones  
microphone stands  
microphone cables  
1 Peavey 400 watt PA

### **House:**

12 36" round-top tables  
18 padded light wood chairs  
24 padded dark-green chairs  
12 padded light-green chairs  
1 small grand piano

# Seating

## Seating Chart



**Seating Capacity:** 502 seats, as well as 8 spaces for wheel chairs, all on one bi-raked level

# Stage Specifications

## Dimensions

### **Deck:**

Height from House floor = 3'5"

Depth from Proscenium Arch to Cyclorama = 31'

Depth from Proscenium Arch to Ground Row Strip Lighting = 27'

\*Roof height = 41'

\* Although the actual fly-loft roof height is 41', we are at present "**dead hung**" with no working line sets/flies.

### **Apron Depth:**

4'2"

### **Proscenium Arch:**

Height = 17'10"

Width = 35'

### **Light beam Throw:**

Control Booth to Apron = 77'

Control Booth to Projection Screen = 90'

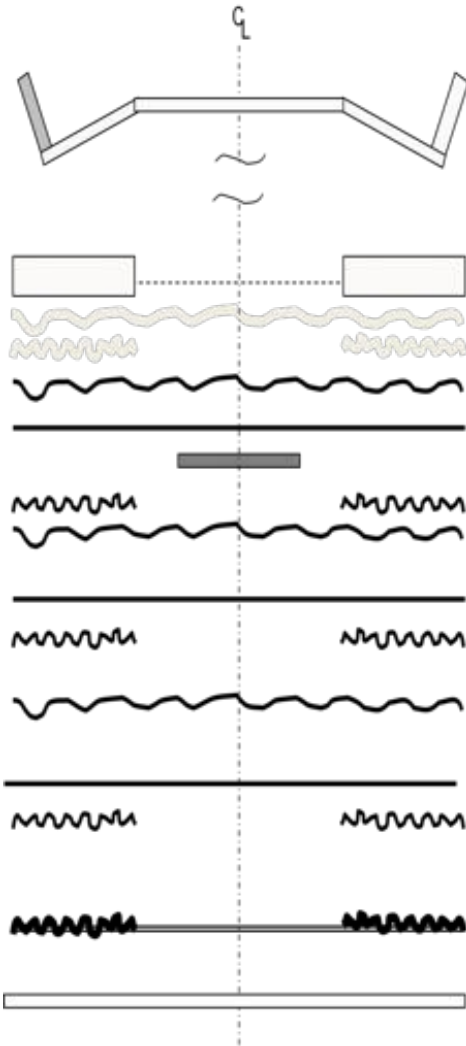
Lighting Cove to Apron = 25'

Lighting Cove to Proscenium Arch = 29'

# Stage Specifications

## Rigging

### DEAD HUNG DRAPERY & ELECTRIC BATTEN DIAGRAM \*NOT TO SCALE



-FOH Cove: Trims at 25' above house floor and 21'6" above deck. Throw to apron is 25', and to proscenium arch 29'

-Proscenium Arch: 35' wide & 17'10" high

-Grand Curtain Valance: bottom edge is 14' off deck

-Grand Curtain Traveler: just upstage of valance

-#1 Black Velour Border: bottom edge is 14' off deck

-#1 Electric: trims at 16'6"

-Front Projection Screen (motorized): 12'W x 16'H

-#1 Adjustable Black Velour Legs: dress in at 15', out at 31'6", upstage of proscenium 8'3"

-#2 Black Velour Border: bottom edge is off deck 14', upstage of proscenium 11'3"

-#2 Electric: trims at 16'6", upstage of proscenium 12'6"

-#2 Adjustable Black Velour Legs: dress in at 15', out at 31'6", upstage of proscenium 14'8"

-#3 Black Velour Border: bottom edge is off deck 14', upstage of proscenium 19'

-#3 Electric: trims at 16'6", upstage of proscenium 20'8"

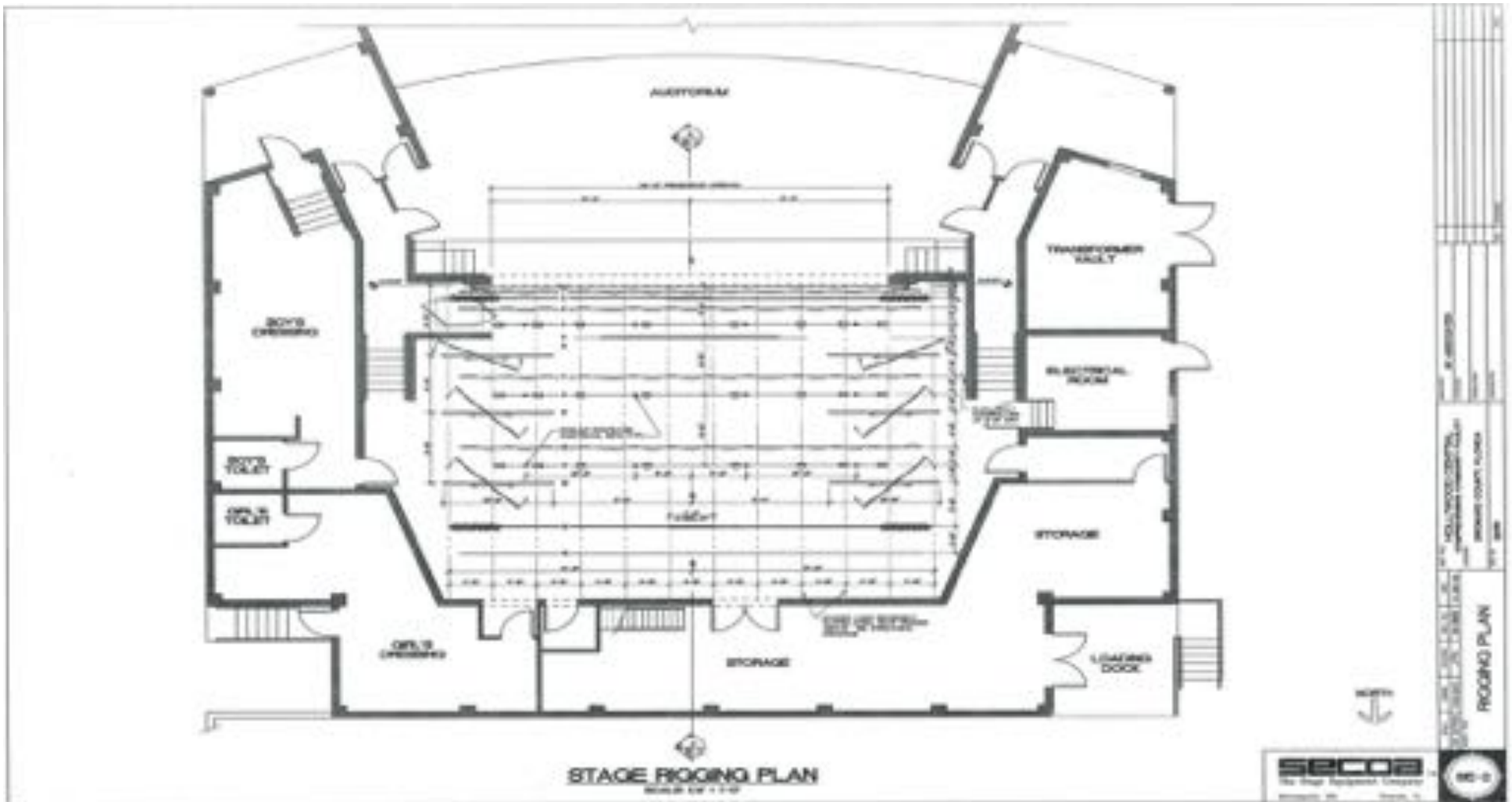
-#3 Adjustable Black Velour Legs: dress in at 15', out at 31'6", upstage of proscenium 25'

-Black Velour Traveler: upstage of proscenium 27'6"

-Cyclorama (natural color muslin): 42'W x 21'H 31' upstage of proscenium 36'8" upstage of apron edge

# Stage Specifications

## Rigging



# Dressing Room

We have two dressing rooms. One off stage-left and the other is upstage to the left.



Each room comes standard with the following:

- 3 Tables
- Chairs
- Clothes rack
- Vanity
- Restroom
- Full length mirrors
- Access to exterior grounds

**\*NOTE:** Additional needs or special arrangements can be made upon request.

# Lighting

## **SPECIFICATIONS**

**ETC Express 24/48:** Located in control booth, but can also run from stage left wing, used for focus and hang purposes from apron, or run from within the house.

**ETC Sensor Dimmers:** 62 dimmers @ 2.4KW per circuit, SOFT-PATCHED at console. There are 13 circuits in the front of the house lighting cove, 13 circuits on each of the 3 onstage electrics overhead, 4 floor pockets with 2 circuits each located offstage CSL, CSR, USL, USR, and 1 floor pocket with 2 circuits located as USC. The 3 electric pipes are driven by electric winch and located at 4'3", 12'6", and 20'8" upstage of the plaster line.

**Additional Electric Power:** There is a 400 Amp, 3 Phase electrical service panel (company switch) located off stage right.

**\*NOTE:** *Only a licensed electrical contractor may tie into this feed. You must consult with the Technical Director if you plan on bringing additional electrical equipment or lighting instrumentation.*

### **Instrumentation:**

- 14 ETC 26° Source Four Ellipsoidal lights (575W)
- 2 ALTMAN 6x12 Ellipsoidal lights (750W)
- 2 ALTMAN 6x12 Ellipsoidal lights w/iris (750W)
- 18 ALTMAN 6x9 Ellipsoidal lights (750W)
- 14 ALTMAN 6" Fresnel lights (750W)
- 12 8' strip lights, 4 colors with R-40 type lamps (120W/lamp)
- 2 ALTMAN 1,000 Q Follow Spots
- 2 Strobe Lights w/ adjustable rate/intensity (50W)
- 6 10' Lighting Booms w/ 50lb round bases
- 2 Pipe-end Light Ladders
- 1 12" Mirror Ball w/ rotating motor
- 14 4-way Barn Doors for Fresnel's
- 14 Top hats for Fresnel's
- 2 Drop-in Irises (Source Four Ellipsoidal Spotlights)
- 2 19° Lens Tubes (Source Four Ellipsoidal Spotlights)
- 1 Black Sharks tooth Scrim 42x17 – *That may be dead hung from any of the three electrics.*

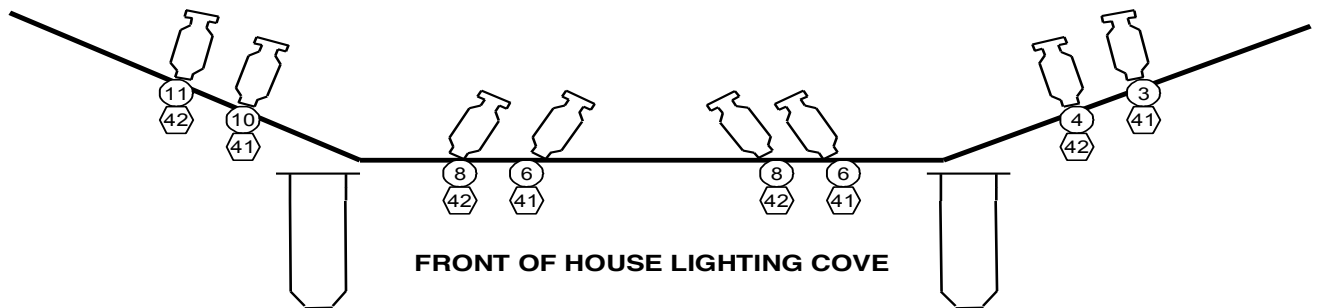
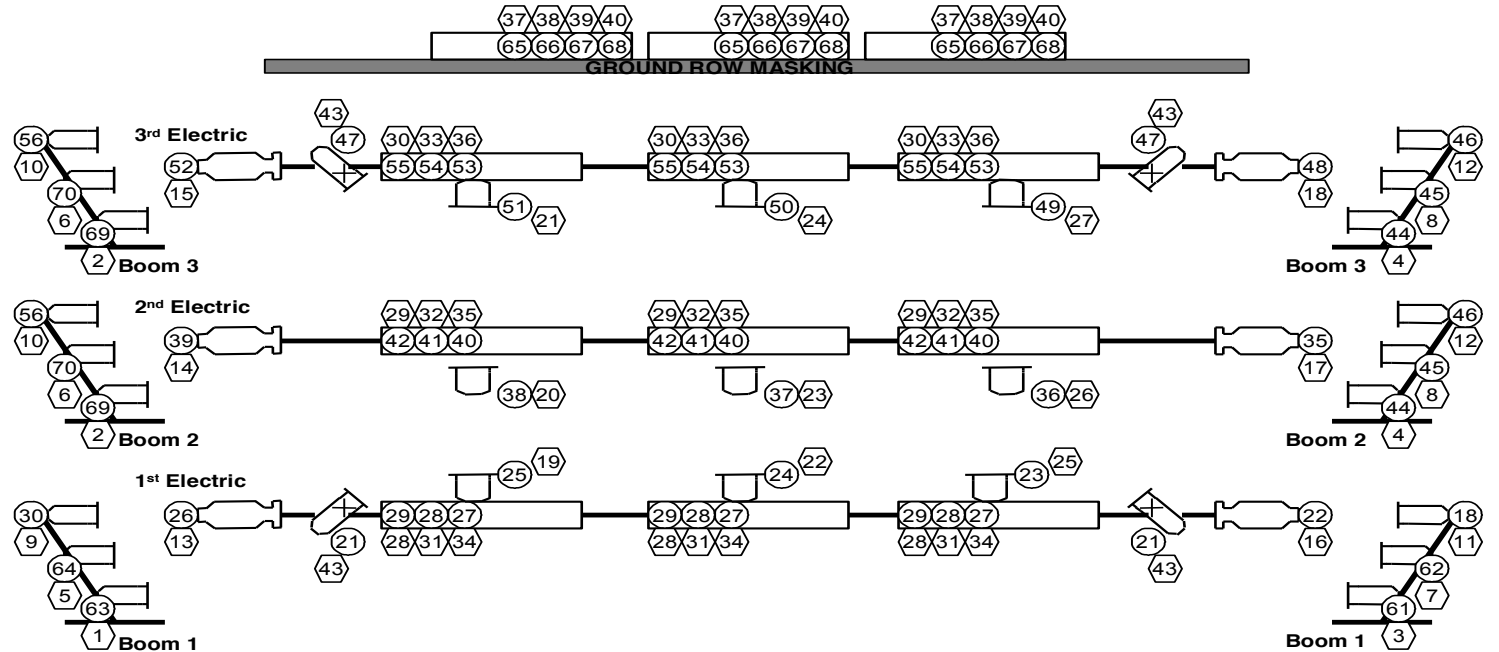
**\*NOTE:** *An array of patter holders, color frames, donuts, cuts of gel and powder cable extensions are available.*



# Lighting

## HOUSE LIGHT PLOT

### GROUND ROW BORDER LIGHTS



## **SPECIFICATIONS**

### **Front of House Console:**

SOUNDCRAFT DELTA SR 32 CHANNEL MIXING CONSOLE

(Located in the control booth, can be run from the inside of the house if preferred)

1 Stereo Rane 1/3 octave EQ

2 ALTEC LANSING 1/3 octave EQ's

### **Available Outboard Gear:**

LEXICON LPX 5 & MX400 effects processors

### **Source Gear:**

1 TECHNICS 5-disc CD player

1 Numark MP103 CD player

1 TECHNICS dual cassette player

1 JVC dual cassette player

### **Amplification & Drive:**

CROWN COM-TECH SERIES POWER AMP SYSTEM

### **Speakers:**

4 ALTEC LANSING 8Ω stage monitor speakers

4 EV 15" w/ a 1" horn

(House Right & Left with Center Cluster)

### **Microphones:**

11 SHURE ULXS4 DIVERSITY wireless receivers

We have a total of 11 wireless units that can be used in any of the following combinations:

11 lav microphone and 1 hand held

5 lav microphone and 4 handheld

(Or anything between those two combinations)

4 SHURE SM58 handheld microphones w/ floor stands

# Communication

## **SPECIFICATIONS**

CLEAR-COM dual channel headset/intercom system:

### **9 headset stations:**

- 2 @ Control Booth
- 1 @ Rear of House Right
- 1 @ Rear of House Left
- 1 @ Center Front Apron
- 1 @ Offstage Right
- 1 @ Offstage Left
- 1 @ Front of House Lighting Cover

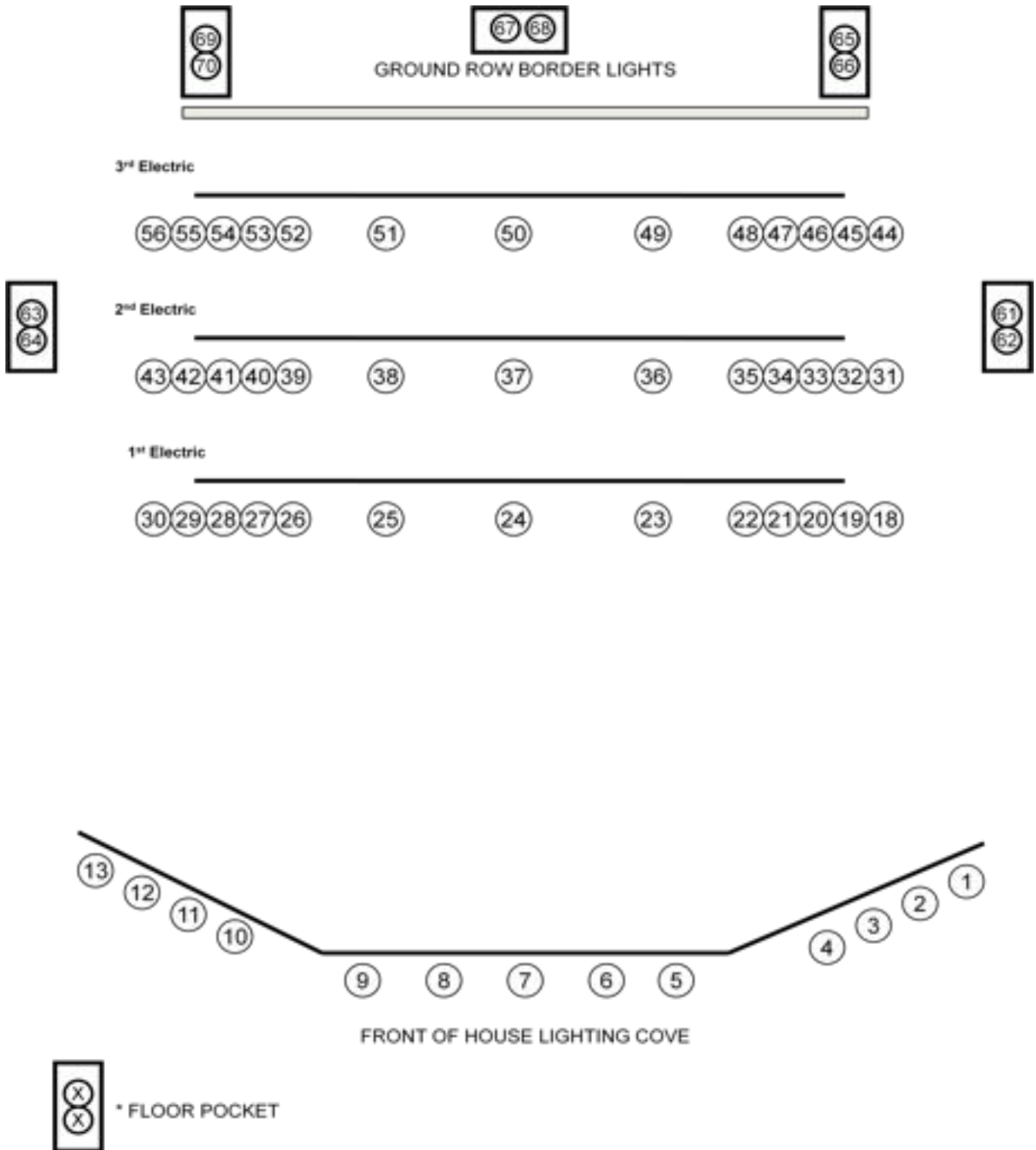
### **3 intercom stations:**

- 1 @ Box Office Ticketing Window
- 1 @ Men's Dressing Room
- 1 @ Women's Dressing Room

**\*NOTE:** *Both channels of the system can be linked for total communication operations.*

# Circuit Locations

## House Circuit Map



# Inventory

## **SPECIFICATIONS**

### **Tables:**

- 7 plastic 6' folding tables
- 6 round wood 5' tables

### **Chairs:**

- 101 school chairs (SBBC)

### **Projectors:**

- MOTORIZED 12' x 16' FRONT PROJECTION SCREEN:  
Located just upstage of the 1<sup>st</sup> black valance; can be controlled offstage right or from the control booth
- 1 Hitachi CP-WX8240 LCD projector (Lens has a throw of 90')
- 1 Dukane 2200 Lumans projector
- 1 SAYNO DVD-8000 DVD PLAYER

### **Orchestral:**

- 14 Black Manhasset metal music stands
- 5 WENGER acoustical shells
- 5 WENGER 6' 3-step/4-step choral risers
- 15 WENGER 4' x 8' platform risers: 5 @ 8", 5 @ 16", and 5 @ 24" in height

### **Pianos:**

- 1 YAMAHA C7 GRAND PIANO

### **Misc:**

- 4 ashtrays
- 7 black stanchions (black straps)
- 2 bullets
- 8 chrome stanchions (red rope)
- 2 green ice buckets
- 2 portable cloths racks
- DOUBLESIDED VINYL DANCE FLOORING  
(5 5-foot wide x 36' long panels; colors: black & grey)

# Rental Rates

## RENTAL RATES

### **\*FULL THEATER**

Monday – Sunday \$500 - 4 hour block (space only)

Add'l \$200 per hour

\* Lighting and sound at an additional cost

○ Light Package (4 hour block) is an additional \$250

○ Sound Package (4 hour block) is an additional \$250

### **LOBBY**

Monday – Thursday \$300 - 4 hour block

Friday – Sunday \$350 - 4 hour block

Add'l \$125 per hour

### ***APPLICABLE DISCOUNT***

Non-profit – 20% Return Client/Hollywood- 10%

**NOTE:** Any applicable discounts will require verifiable documentation as determined by ACCH Management. One discount per client.

---

**STAFF** (Hourly rate, 4-hour minimum\*\*) Lessees are required to utilize ACCH personnel as determined in advance by ACCH Management.

- Stage Manager / Designer \$35/hr
- Technician, Sound, Light, Stagehand \$25/hr
- Box Office / Event Supervisor \$25/hr

**NOTE: Staff, crew, and facility rates are DOUBLED for events occurring during a NATIONAL HOLIDAY.**

**\*\*All staff members are required to have an unpaid one-hour break for every eight-hour block unless determined otherwise in advance.**

---

## **ADDITIONAL SERVICES & EQUIPMENT FEES**

**\*Restrictions Apply. Inquire within.**

Wireless Mics (11max)	\$50/per microphone	Box Office Services	Inquire within
Digital Projector	\$150/use	Ticketing Service Fees	<i>Refer to</i>
Grand Piano & Tuning	\$175/event		<i>Attachment B</i>
Platform Riser	\$50 per riser	Ticket Printing Services	\$0.30/ticket
Acoustic Shell	\$100/use (5 pc set)	Merchandise Sales	\$100 flat rate
Vinyl Dance Floor	\$250/use	City Fire Watch	\$75/hr (3-hour min)
Non-Slip Floor Treatment	\$35/application	General Insurance	Inquire within
Custodial Service	\$100-\$200/event	Liquor Liability	Inquire within
Expendables	\$50/event	<i>Security Deposit</i>	<i>\$450 (refundable)</i>
*Additional Cleaning Fee	\$100/event		

---

*\* this charge is incurred for excess glitter, confetti or sequins left on carpet and stage*